

How to Configure a Philips Pronto NG - RU950 to Radio Frequency Control of X10

© Simply Automate, January 2004

This project will show you how to:

- Configure your Pronto to control X10 devices with Radio Frequency
- Customise your Pronto's buttons
- Create controls for individual rooms in your home

Abstract

Using the versatile and fully-customisable Pronto universal remote control it is possible to control TV, DVD, VCR, Hi-Fi and X10 devices. This guide will show you how to control X10 using its in-built Radio Frequency (RF) transmitter.

Introduction

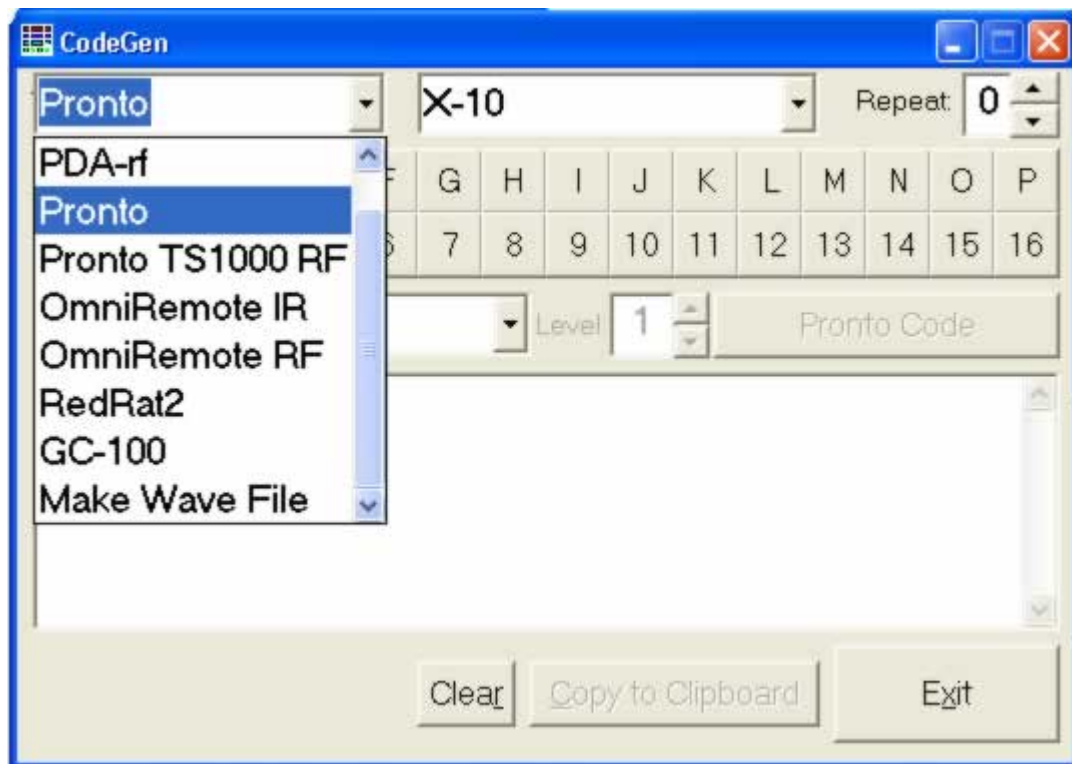
The Philips Pronto Ru950 is a stylish and well-designed unit that can be used to replace your existing remote controls. This reduces clutter and can give your home an extra touch of class. Even more impressively, the Pronto can also turn on, off and dim your lighting, switch on appliances and much more. Because the Pronto has a built-in learning mode and easy to use configuration software, using it to control infra red devices is relatively straightforward. However, programming the RF codes is more complicated. This guide will show you how to customise your Pronto to control the X10 devices you require.



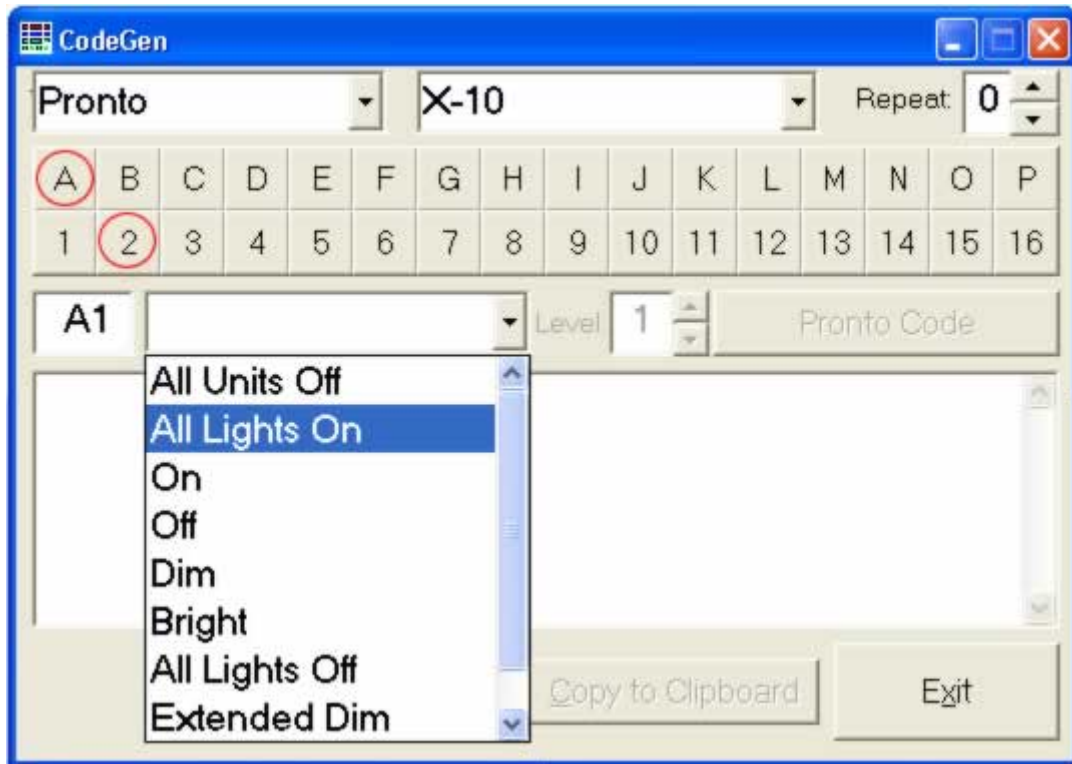
Step-by-step Guide

Simply follow the following step-by-step instructions to create the set-up you want.

- 1 Firstly, we recommend that you download the latest Firmware update from Philips to take advantage of the updates to your Pronto. Secondly, you will need a shareware program, written by Dave Houston, to generate the RF codes to control X10. Please [click here](#) to download this software.
- 2 The next step is to install the Codegen software. To do this, click on the "setup.exe" icon to install the software. Once the program has installed, run the Codegen main program.
- 3 When the software has loaded, select "Pronto" and "X10" from the drop-down menus, as shown below:

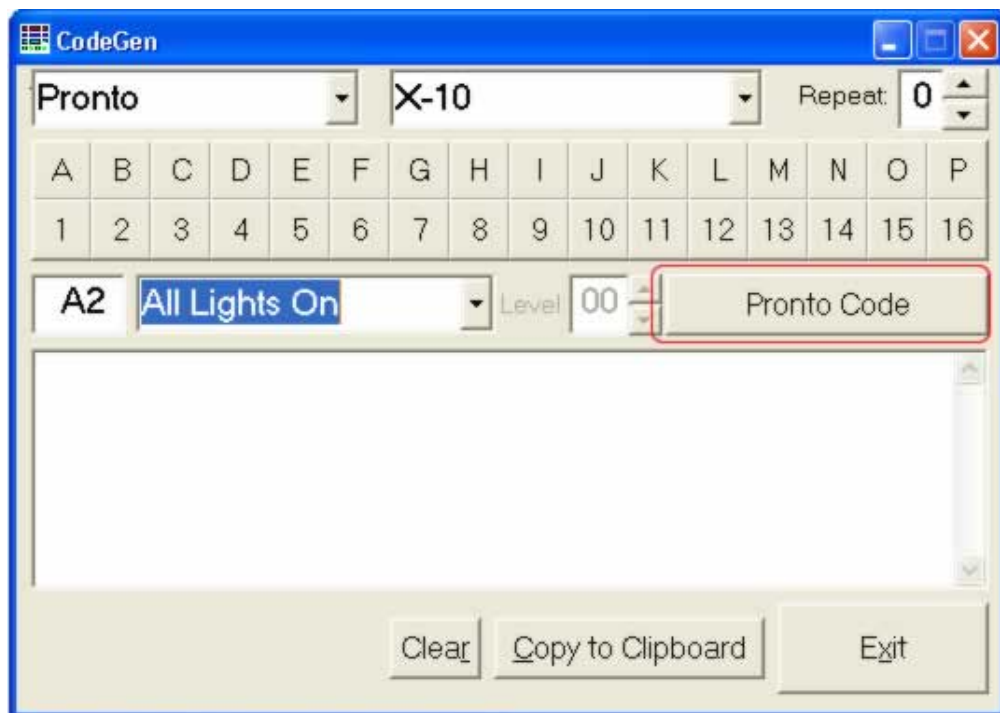


- 4 We are going to use House Code "A" Unit Code "2" in this example. Click the "A" and "2" numbers, as circled in red below:

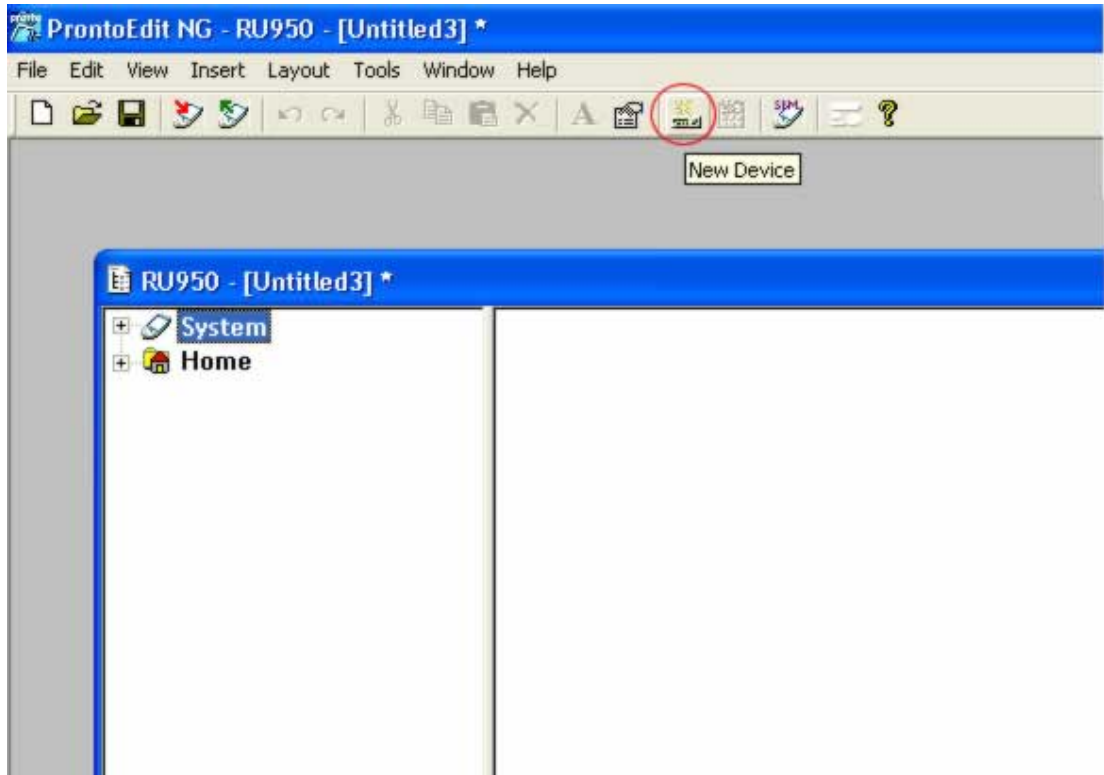


- 5 For the purposes of this example we will choose the X10 command "All Lights On". Select this option, or the X10 command you want to control, as shown above:

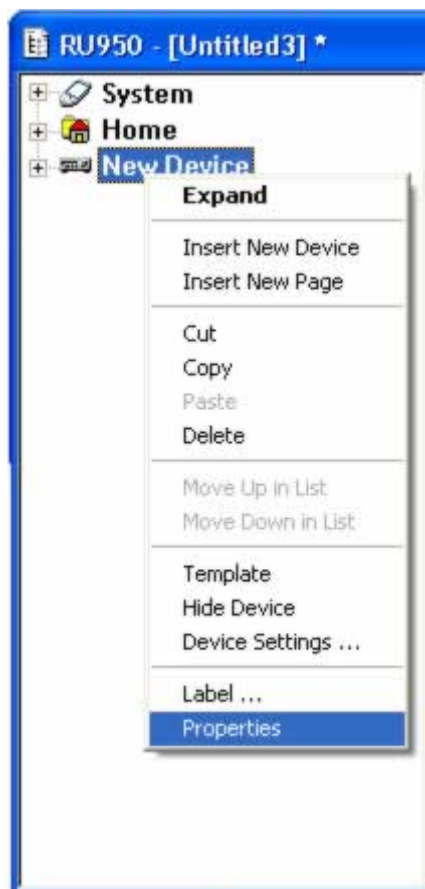
- 6 Now click the "Pronto Code" button as circled in red, below:



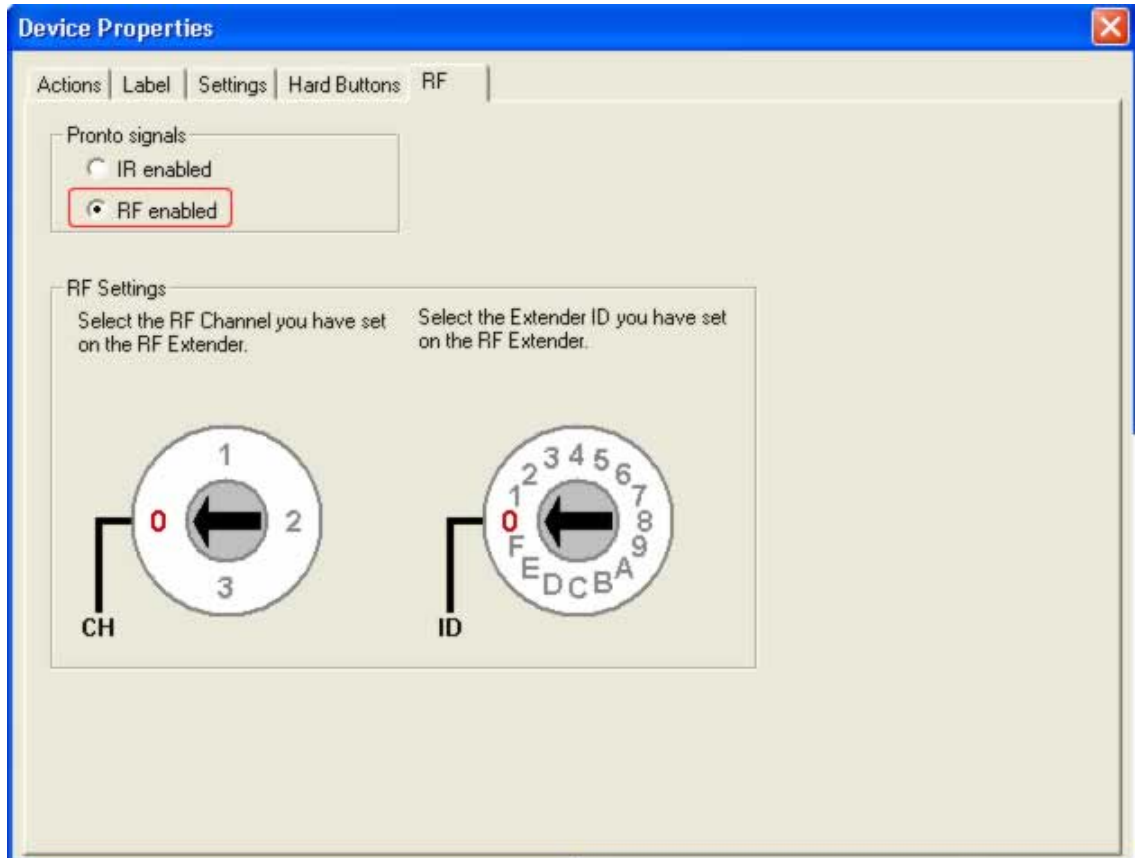
- 7 The resulting code is the information the Pronto needs to execute the "A1" "All Lights On" code. Highlight the code as shown below:



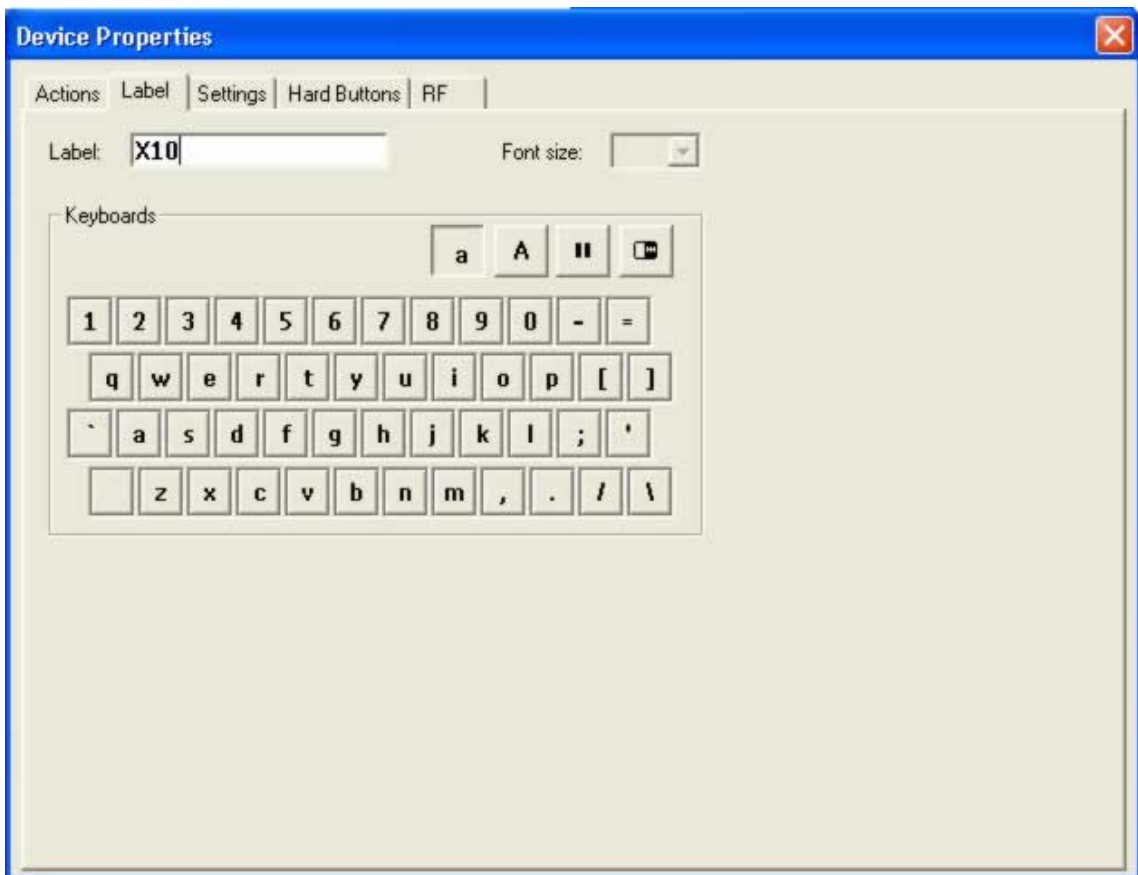
- 10 Click the right mouse button on the "New Device" you just created. Select "Properties" from the menu:



- 11 Select the "RF" tab and click the "RF enabled" panel:



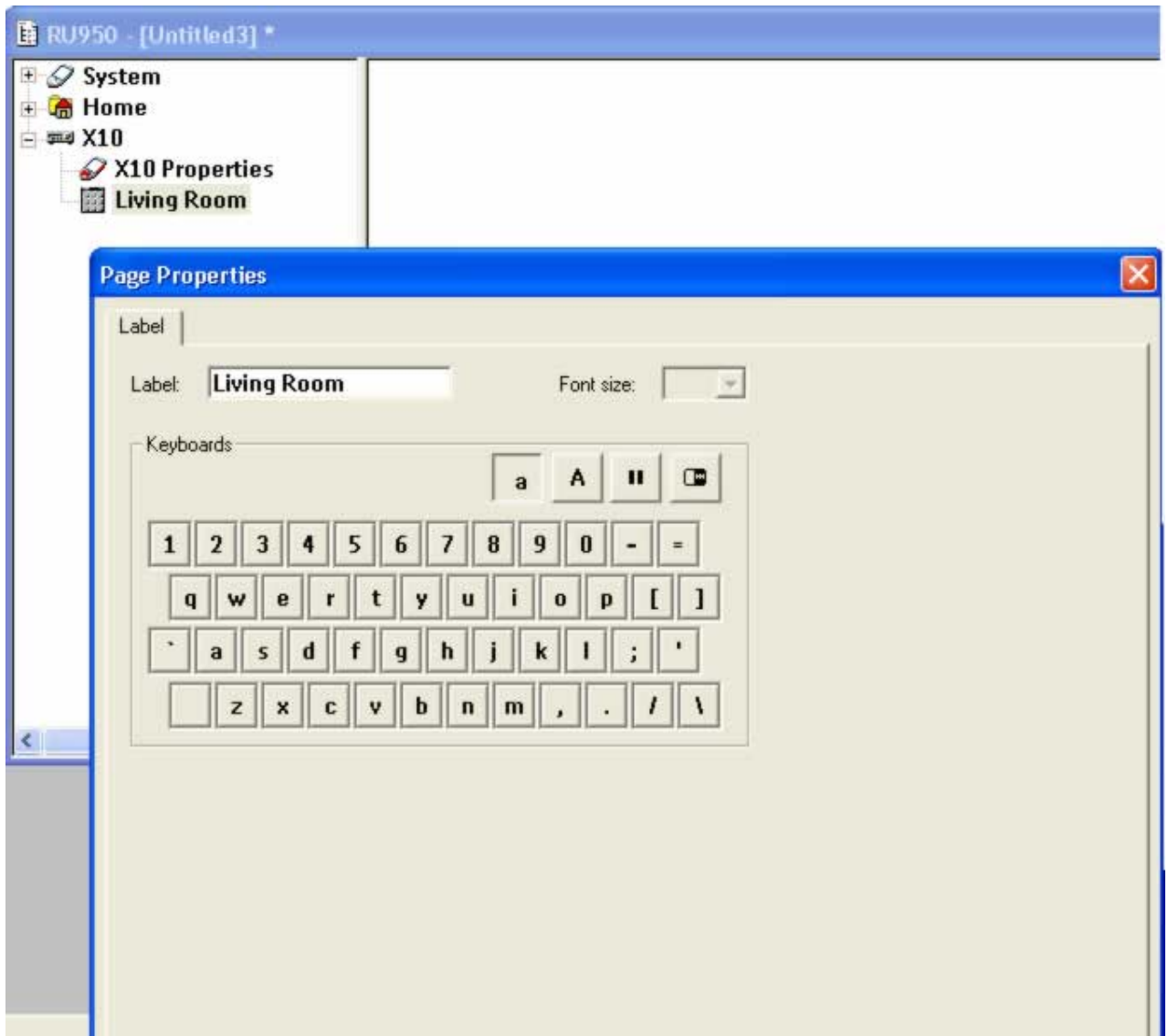
- 12 Now select the "Label" tab. We are going to call this "X10" Press the close button (the red X in the right hand corner, below) to return to the main menu:



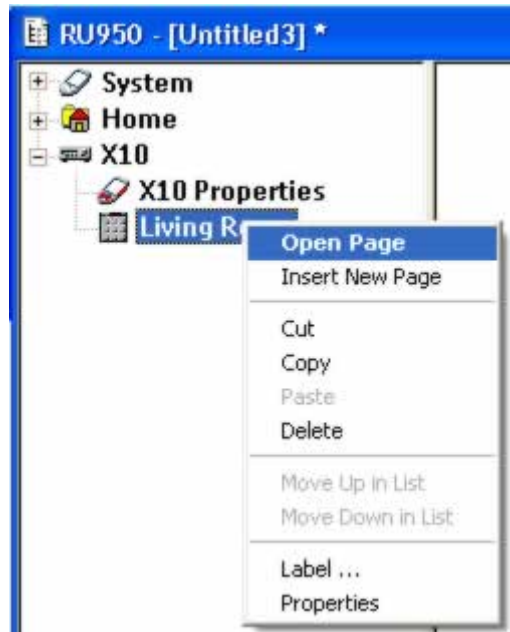
- 13 Select the "New Page" icon from the menu:



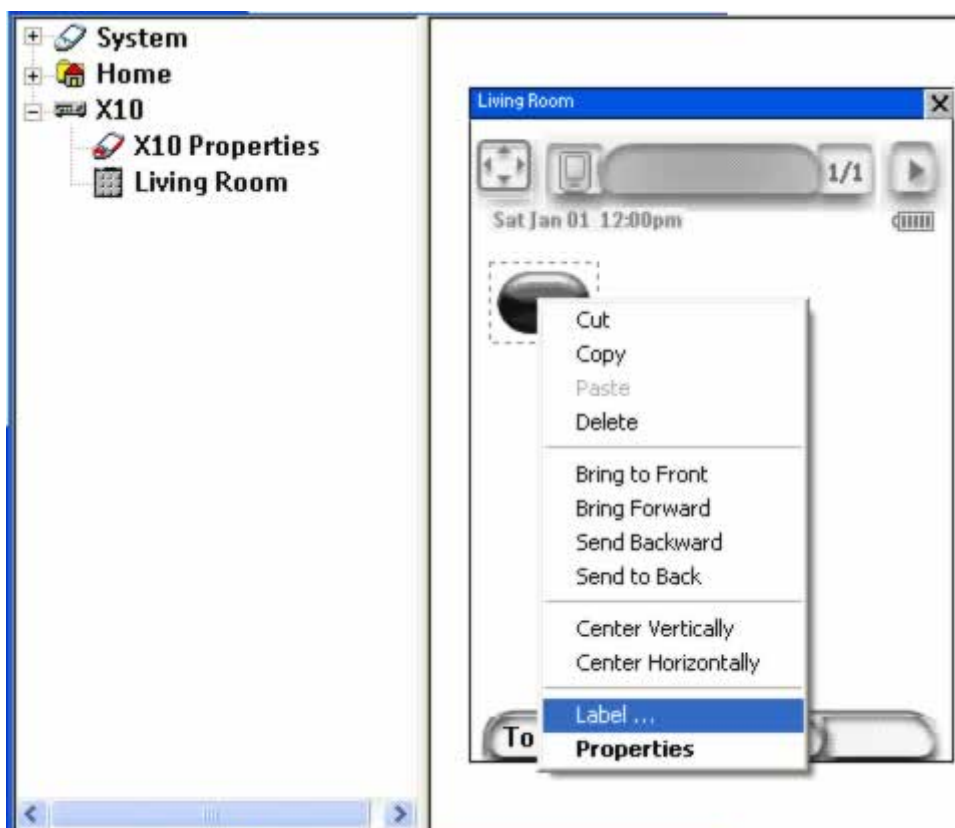
- 14 Right click the "New Device" button that appears below the "System" tree and right click "New Device". For the purposes of the example we will call this "Living Room":



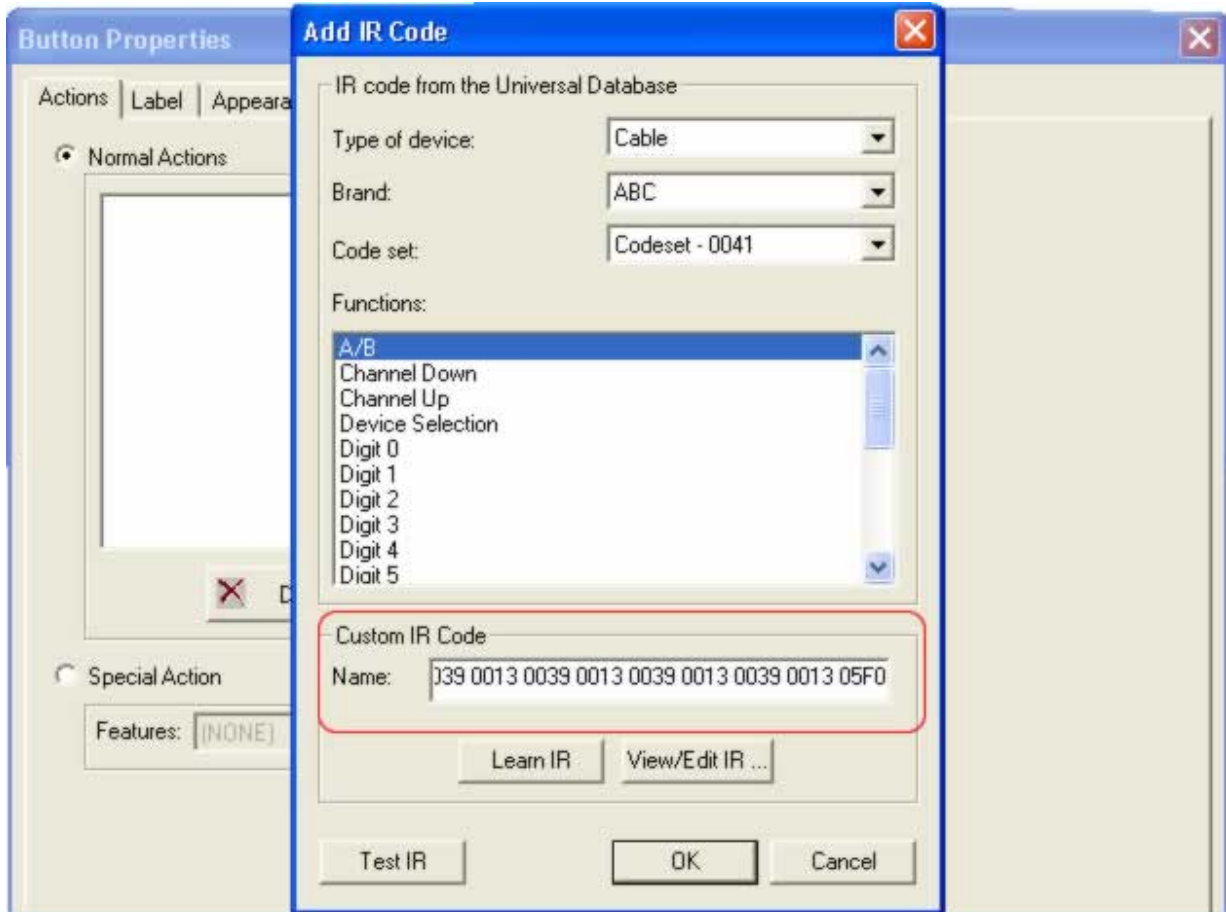
- 15 Close the dialogue box and right-click the "Living Room" folder we just created. Select "Open Page" from the menu:



- 16 The page will now open for you to edit it. Right-click on the new button diagram and select "Insert new button". Position the button where you want to place it. Right-click the button again and select "Label...":



- 17 For the purposes of this example we will call this button "All On". Close the dialogue and right-click the new button for a third time. Select "Button Properties" and from the "Actions" tab click "Add IR Code". Copy the Pronto Code we generated earlier and paste it into the "Custom IR Code" box:



- 18 Click the "OK" button and your Pronto will now turn "All Lights On" on Code "A1"! Repeat this process for other X10 units you wish to control.

